



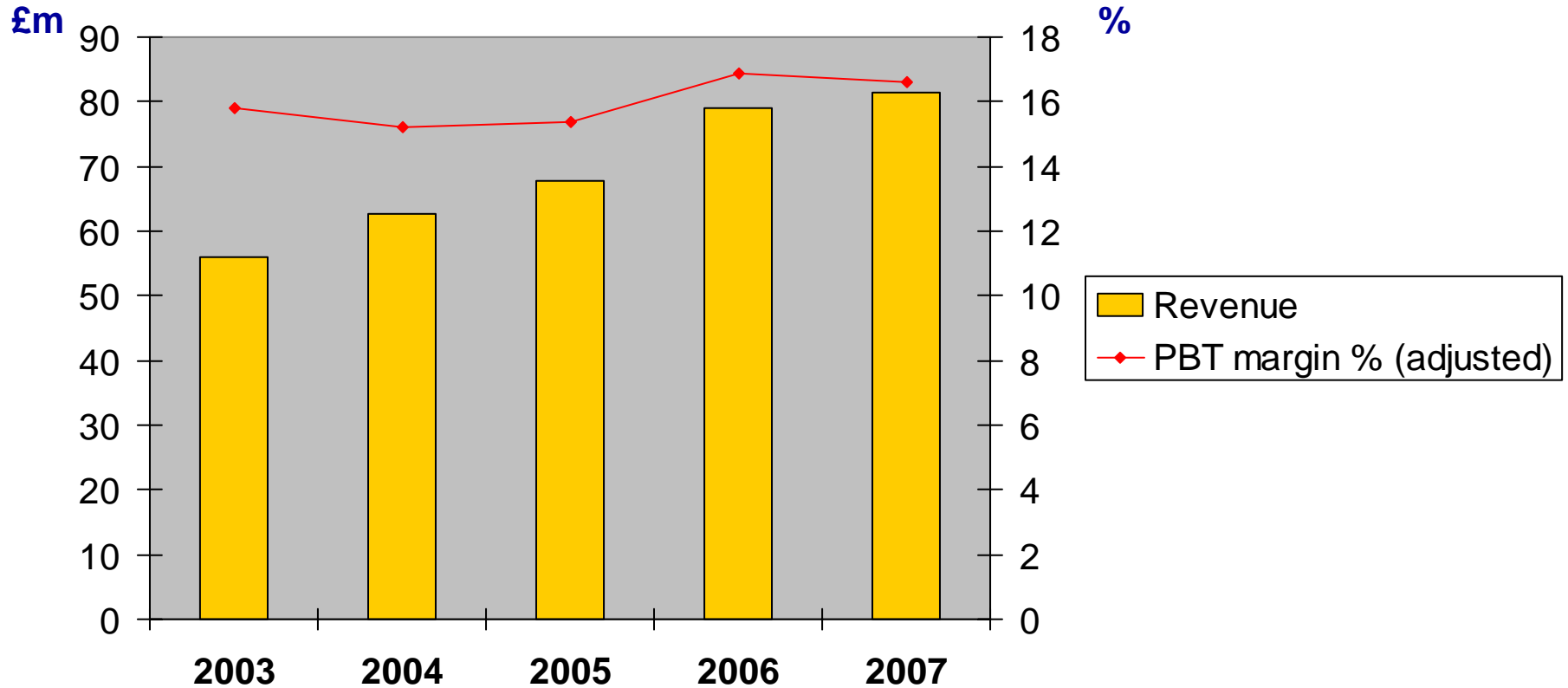
*A leading provider of support services for the insurance industry*

**Financial strength**

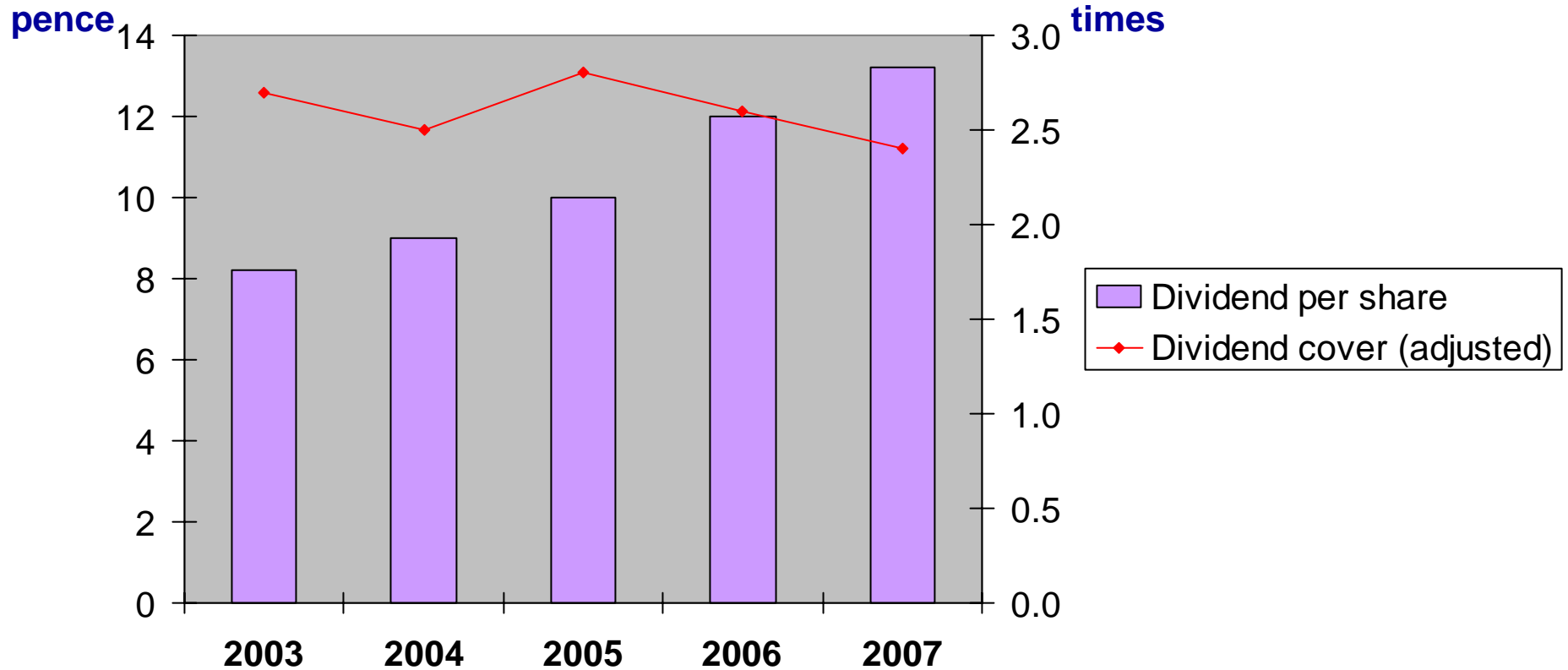
**9 May 2008**

<b>Business performance</b>	<b>Financing and flexibility</b>
<ul style="list-style-type: none"><li>• Revenue growth and stability</li><li>• High margins</li><li>• Upside opportunities (acquisitions and organic)</li><li>• Dividend growth and cover</li></ul>	<ul style="list-style-type: none"><li>• Low capital intensity</li><li>• Debt capacity</li><li>• Good cash flow</li></ul>

# Revenue and margin



# Dividends and cover



# Cash flow

